



## Guide

Thank you for visiting Yu No Hana ! This accommodation is managed by little family owner and cats.  
Please relax below the nature' s green of Umegashima, rivers' sound and enjoy the local Japanese food with hot spring bath.

Check In	<ul style="list-style-type: none"> <li>We will guide you to your room. Please let us know when you need your room key.</li> </ul>
Staying form (a piece of paper for stay)	<ul style="list-style-type: none"> <li>Guest's representative need to fill in the form and submit it before check out.</li> </ul>
<p>Entering the hot spring</p> <p>※Please check the [how to enter the hot spring] attached.</p>	<ul style="list-style-type: none"> <li>You are possible to enter the hot spring between check in time ~ 10PM, between 6AM ~ 10 AM .</li> <li>This is a private bath.</li> <li>You are not allowed if hot bath are occupied. Please check the sign on the door !</li> </ul> <div> </div> <ul style="list-style-type: none"> <li>Take off your clothes, and enter the bath with naked condition.</li> <li>Contains a lot of vapor inside onsen(hot spring) and it cause the floor are slippery. Be careful for not slipped.</li> <li>You are possible to use the bath towel, face towel, shampoo, conditioner and body soap that are prepared.</li> <li>Shower water will getting hot after a while, please let the shower coming until it getting hot.</li> </ul> <p><b>About Yu No Hana</b></p> <p>The substances which are floating on the water is water vapor that springs from the onsen. They called [Yu No Hana]. Proofing the spring's natural substances. Feel relieved to enjoy the bath.</p> <p><b>Adjusting the temperature</b></p> <p>We do create the spring pipe to our inn. If the onsen are not hot enough causing by weather, we will adjust it by firing the woods. If you are not possible to enter the bath, please adjust it by following these steps.</p> <div> <p>★If you feel too hot : ①Mix the hot water and make them equal ② Put the cold water if you still feel hot.</p> <p>★If you feel lukewarm : ①Mix the hot water and make them equal ②Please let us know</p> </div>
About the meal  Please enjoy our handmade food with using the local stuff.!	<ul style="list-style-type: none"> <li>Dinner : 6PM~/Breakfast 8AM~. Let us know if you have request for another time.</li> <li>Usually the place for eating breakfast/dinner is at banquet hall or your room. Let us know if you have request for place.</li> <li>Additional charge for alcohol drink. Shizuoka tea is free of charge.</li> <li>We do have folk, spoon and knife. Let us know if you need them.</li> <li>We will clean your plates after you finish your meal. Let us know when you finished your meal.</li> <li>Let us know if you have an allergic on food.</li> </ul>
Futon	<ul style="list-style-type: none"> <li>We will prepare your futon</li> </ul>
Check out	<ul style="list-style-type: none"> <li>Check out time is 10AM.</li> <li>Payment method is cash or E-Money.</li> <li>If you want to walk around even after check out time, you are possible to keep your car or things in our inn. Don't hesitate to tell us.</li> <li>Bus schedule toward Shizuoka station is at reception.</li> </ul>



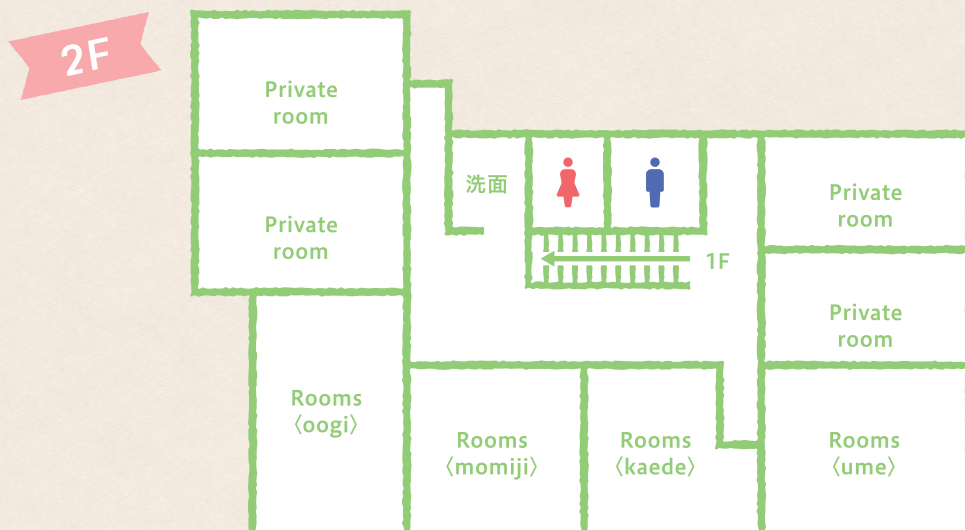
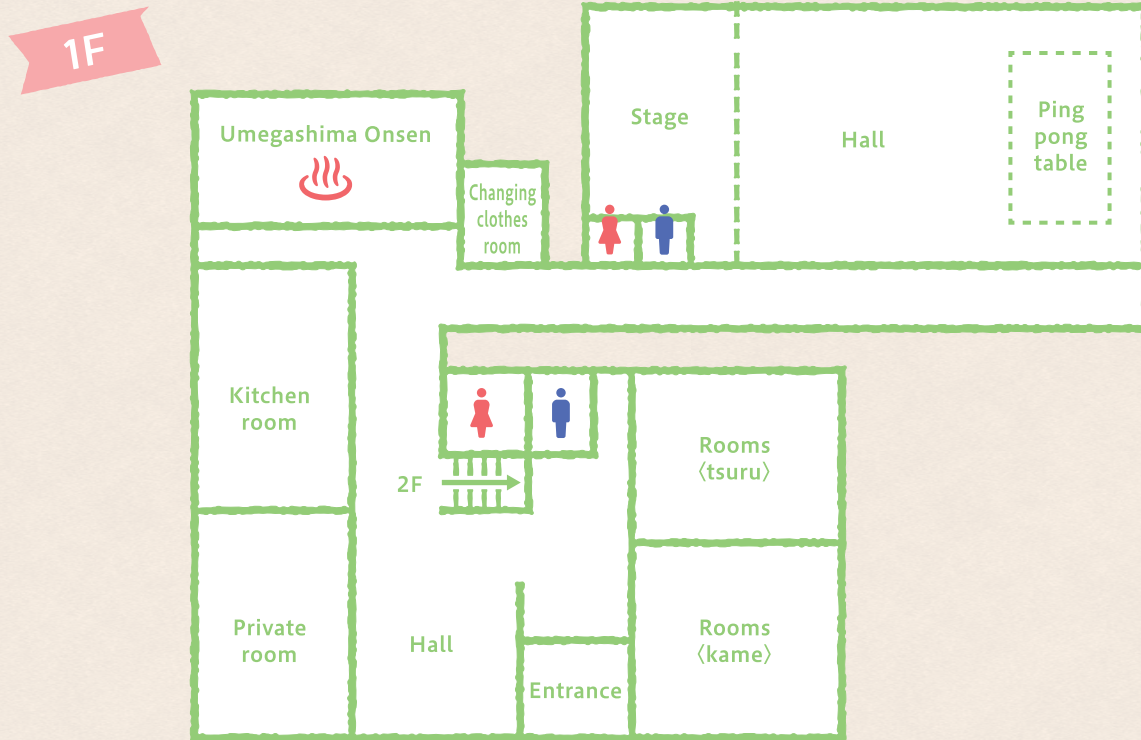
- We will go inside your room to serve the meal and lay your futon. We hope for your understanding.
- Whole accommodation facilities (including balcony) are prohibited for smoking.  
Please use the smoking facilities for smoking.
- Please wear your clothes or yukata if you want to get out from your room.
- Take care of your belongings especially your valuables belongings.
- Please let us know if you want to walk around at the night.
- There are cats and child in the inn. Hope that we can get along with you.
- Insects are exists outside. Please let us know if you want to let the insects go out.

Feel free to let us know if you have anything !



## Accommodation map

There are a lot of types of rooms in Yu no Hana.  
Please ask the staff for more details.



Please enjoy as you  
staying in your  
hometown. Meow...



### Equipment

Rooms/6 units  
Bath type/family bath tub  
Capability spaces/18 people  
Special dishes/Mountain vegetables, Boar hotpot (need reservation)  
Hall/45 tatami 1 unit  
Facilities/ping pong table 2 units, camping ground, karaoke

Feel free to use the waterfall viewing, day trip hot springs, breaks and meals

梅ヶ島温泉  
湯の華

Umegashima Onsen  
Yu No Hana 5276-2,  
Umegashima, Shizuoka ShiAoi Ku,  
Shizuoka Ken, 421-2301, Japan  
☎ 054-269-2253

